



CAMBRIDGE
INSTITUTE OF TECHNOLOGY
An Autonomous Institution

ENGINEERING FOR **SUSTAINABILITY**

INNOVATING FOR **HUMANITY**



B.E.

Information booklet for
BACHELOR OF ENGINEERING

engg.cambridge.edu.in



WHY CHOOSE

CAMBRIDGE INSTITUTE OF TECHNOLOGY ?

We believe you can achieve bigger things if nurtured and provided with the right guidance, supporting infrastructure and world-class opportunities.

At Cambridge Institute of Technology, we help you:

- Choose the right path based on your interests and skills.
- Build a solid profile, and facilitate kickstarting your career early with a globally aligned and enriching experience.
- Explore your passions, develop your skills, and learn how to make a winning impact in your chosen field with an open, adaptable, and inquisitive mind.
- Earn an internationally recognized degree through a tailored learning experience and become part of a community of thought leaders from all walks of life.

At Cambridge Institute of Technology, you can participate in international student exchange programmes, opt for an internship, gain experience in your chosen field, and network with global industry leaders on campus.



Approved by AICTE, New Delhi |
 Autonomous Institute Affiliated to VTU, Belagavi |
 Recognized by Govt. of Karnataka |
 Accredited by NAAC A+ & NBA | UGC 2(f) Certified |
 NIRF Ranked Innovation Institute 2023 |
 National Research Development Corporation |
 An ISO 9001:2015 Certified Institute |
 Recognized as SIRO by DSIR, Govt. of India |
 Recognized as Host Institute by Ministry of MSME,
 Govt. of India

7TH RANKED

EMERGING PRIVATE ENGINEERING COLLEGE (ALL INDIA)

15000+

ALUMNI ACROSS THE GLOBE

350+

EXPERIENCED FACULTY MEMBERS

THEWEEK

ASSOCHAM
INDIA

QS I-GAUGE
INDIA UNIVERSITY RATING
DIAMOND

DATAQUEST

RANKED 2ND

RANKED 68TH

RATED DIAMOND

RANKED 68TH

AMONG PRIVATE COLLEGES - BENGALURU

BEST EMERGING ENGINEERING COLLEGE AWARDED FOR INDIA - SOUTH

IN "TEACHING & LEARNING" BY QS I-GAUGE

ACROSS THE COUNTRY BY DATAQUEST T-SCHOOL SURVEY

BACHELOR OF ENGINEERING (B.E.) PROGRAMMES

At Cambridge Institute of Technology, we help you transition into your career while studying. Whether you choose to join the industry, the research community, or start your own venture, you'll find all the support systems on campus.

HONOURS DEGREE: EARN AN ADDITIONAL 18 CREDITS AND AVAIL B.E. HONOURS DEGREE FROM VTU.

***FOR MORE DETAILS, REFER TO THE REGULATIONS.**

COMPUTER SCIENCE & ENGINEERING

ELECTRONICS & COMMUNICATION ENGINEERING

ELECTRICAL & ELECTRONICS ENGINEERING

MECHANICAL ENGINEERING

CIVIL ENGINEERING

ARTIFICIAL INTELLIGENCE & MACHINE LEARNING

COMPUTER SCIENCE & ENGINEERING
(INTERNET OF THINGS & CYBER SECURITY INCLUDING BLOCKCHAIN TECHNOLOGY)

COMPUTER SCIENCE AND ENGINEERING
(DATA SCIENCE)

CHOOSE YOUR PATH EARLY.

BUILD A COMPETITIVE ADVANTAGE.

PATH - I

JOB

Become an Industry Professional



PROGRAMMES
25+ Industry-Led Skill-Based Programmes.



GUIDANCE
Expert guidance and assistance from Talent Transformation Hub.



PLACEMENT
Assured 100% placement assistance with leading corporates for eligible candidates.

PATH - II

RESEARCH

Join the Research Community



WELL-FUNDED RESEARCH
Join the INR 20Cr+ funded research community of your interest.



RENOWNED RESEARCHERS
Work with 100+ top international technology researchers in the industry.



PATENTS & PUBLICATIONS
Publish in leading scientific journals and file patents.

PATH - III

ENTREPRENEURSHIP

Start your Own Venture



FUNDING & INFRASTRUCTURE
Get funding, workspace, infrastructure & administrative support for your venture.



NETWORKING
Network with 10+ resident startups.



MENTORSHIP
Learn from 25+ visiting industry mentors.

PROGRAMME

COMPUTER SCIENCE & ENGINEERING

-  4 YEARS PROGRAMME  420 SEATS
-  SPECIALIZATION COURSES
-  REAL-TIME INDUSTRY PROJECTS
-  INDUSTRY EQUIPPED LAB SESSIONS



“ Meet the complex digital needs of humanity and contribute to technology innovation with Computer Science and Engineering. This department and course are the perfect space for you if you like pushing limits and improving the world. ”

HERE, YOU WILL ACQUIRE

- Proficiency in programming, coding, and software development.
- Essential skills in system design and architecture that'll empower you to adeptly design efficient and scalable computer systems.
- Expertise in data analysis and machine learning.
- Knowledge of computer networks, protocols, and security measures.
- Proficiency in Emerging Technologies.
- Problem-solving skills and logical thinking.

YOU ARE A NATURAL COMPUTER SCIENCE ENGINEER IF YOU HAVE:

- Strong inclination for logical reasoning.
- Persistent, patient, and highly motivated.
- Passion to solve complex engineering problems.
- Analyze and adapt to situations naturally.

CAREER OPPORTUNITIES

Functions: Software Developer, Data Scientist, Systems Architect, Network Engineer, Cybersecurity Analyst, Web Developer, Artificial Intelligence/Machine Learning Engineer, Cloud Engineer

Highest Domestic Package
33 LPA*

International package USD
36,000*

Average Domestic Package
10 LPA*

THE CSE EXPERIENCE



Industry supported curriculum



Tech clubs and societies



Networking with Industry



Start-up Incubator



Internship opportunities



Hands-on projects and research

RESEARCH SCOPE



AI & ML



Cybersecurity



IoT



Data Science



Software Engineering



Programming

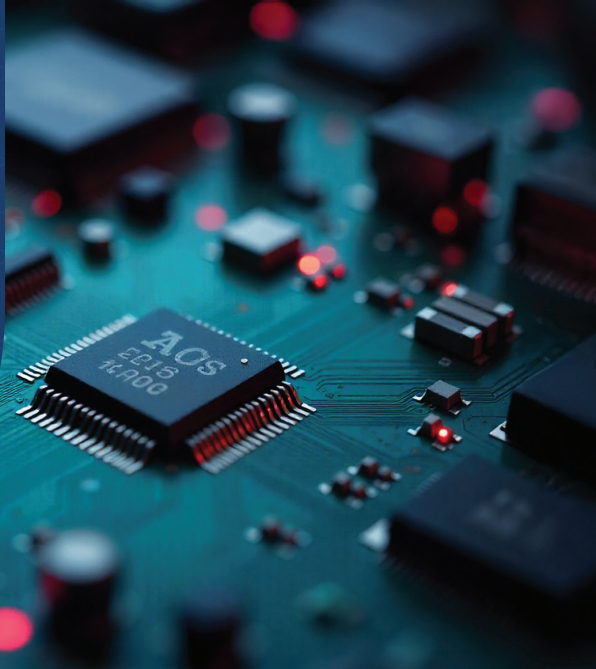


Generative AI

PROGRAMME

ELECTRONICS & COMMUNICATION ENGINEERING

-  4 YEARS PROGRAMME  180 SEATS
-  GLOBAL ALUMNI MENTORSHIP AND CONNECT
-  INTERDISCIPLINARY COURSES FOR INDUSTRIAL RELEVANCE
-  REAL-TIME INDUSTRY PROJECTS



“Imagine being the maestro behind the gadgets we can't live without – from smartphones to satellite communication. As an Electronics and Communication Engineer, you'll dive into the intricacies of electronic systems, design circuits that power our tech marvels, and make sure the world stays connected.”

HERE, YOU WILL ACQUIRE

- Designing and implementing systems that leverage advanced communication technologies.
- Understanding the integration of artificial intelligence and machine Learning algorithms in communication systems.
- Proficiency in chip design and semiconductor technology With practical inputs from Industries.
- Optimizing circuits for diverse electronic applications.
- Integration of communication systems in robotics and automated systems.

YOU ARE A NATURAL ELECTRONICS AND COMMUNICATION ENGINEER IF YOU HAVE:

- Analyse complex systems and troubleshoot issues logically.
- Innately curious about electronic devices.
- Precision-lover and attentive to details.
- Patient, persistent and a logical thinker.

CAREER OPPORTUNITIES

Functions: Telecommunications Engineer, Electronics Design Engineer, Network Engineer, Embedded Systems Engineer, RF Engineer (Radio Frequency Engineer), Signal Processing Engineer, Control Systems Engineer, Telecommunication Software Engineer, Research and Development Engineer, Biomedical Engineer

Highest Domestic Package
33 LPA*

Average Domestic Package
8.1 LPA*

THE ECE EXPERIENCE



Intel FPGA in Intel University Program



Member: IEEE, ISTE



Organizer: ISR events



Core domain Specialization for Product company



20+ corporate MoUs



Internships, real-time projects

RESEARCH SCOPE



Wireless Communications



Signal Processing



Electronics and VLSI



Embedded Systems



Control Systems



Power Systems



Photonics and Optoelectronics

PROGRAMME

ELECTRICAL & ELECTRONICS ENGINEERING

-  4 YEARS PROGRAMME
-  60 SEATS
-  SPECIALIZATION COURSE
-  REALTIME INDUSTRY PROJECTS
-  STATE-OF-THE-ART RESEARCH FACILITY



“ Dive into the world of designing and optimizing electrical systems, from power grids to electronic gadgets. Think renewable energy solutions, smart cities, and cutting-edge medical devices – you're the force driving these advancements. Your skills contribute to humanity by improving energy efficiency, enhancing communication networks, and developing life changing technologies. ”

HERE, YOU WILL ACQUIRE

- Expertise in power electronics for efficient energy conversion and integration of renewable energy sources.
- Understanding and implementing smart grid technologies for modern, intelligent power grids.
- Knowledge of advanced energy storage technologies, such as batteries and supercapacitors, neuromorphic engineering principles for designing circuits inspired by the human brain.
- Expertise in control systems for automation, robotics, and advanced manufacturing.
- Designing electronics that are flexible and can be integrated into wearable technologies.

YOU ARE A NATURAL ELECTRICAL AND ELECTRONICS ENGINEER IF YOU HAVE:

- Mathematical and logical in thinking.
- Translating abstract theories into tangible technological solutions.
- Tackling challenges with hands-on expertise.
- Conscious about safety and inquisitive.

CAREER OPPORTUNITIES

Functions: Electronics Design Engineer, Embedded Systems Engineer, Control Systems Engineer, Power Systems Engineer, Telecommunications Engineer, Network Engineer

Average Domestic Package 6 LPA*

Highest Domestic Package 9 LPA*

THE EEE EXPERIENCE



Industry training and certification



Advanced research lab



Industry mentors



Industry and site visits



Industry research projects on campus

RESEARCH SCOPE



Power Systems and Energy Engineering



Electronics and Embedded Systems



Control Systems and Automation



Electrical Machines and Drives



Renewable Energy and Sustainable Technology

PROGRAMME MECHANICAL ENGINEERING

-  4 YEARS PROGRAMME  60 SEATS
-  RESEARCH AND INCUBATION
-  INDUSTRY CURATED PROJECTS
-  INTERNATIONAL RESEARCH FACILITY AND MENTORS



“Imagine being the mastermind behind everything that moves and functions around us! As a Mechanical Engineer, you're the architect of innovation, designing, and optimizing machines that power our lives. You're the force behind robotics, aerospace marvels, and cutting-edge manufacturing processes.”

HERE, YOU WILL ACQUIRE

- Familiarity with advanced materials, including composites, nanomaterials, and smart materials for innovative product design.
- Proficiency in additive manufacturing techniques for rapid prototyping and complex component production.
- Integration of robotics and automation in manufacturing and industrial processes.
- Understanding and implementing energy harvesting systems that capture and utilise ambient energy for mechanical systems.
- Biomechanics for medical devices, renewable energy integration, advanced control systems and more futuristic systems.

YOU ARE A NATURAL MECHANICAL ENGINEER IF YOU HAVE:

- Excel at solving real-world problems.
- Think creatively about designs.
- Visualise and mentally manipulate three-dimensional objects and systems.
- Work hands-on with precision.

CAREER OPPORTUNITIES

Functions: Design Engineer, Manufacturing Engineer, Maintenance Engineer, Research and Development Engineer, Automotive Engineer, Robotics Engineer, Thermal Systems Engineer, Aerospace Engineer, Energy Systems Engineer

**Highest Domestic Package
10 LPA***

**Average Domestic Package
6 LPA***

THE ME EXPERIENCE



Industry and site visits



Industry projects funded by external funding agencies



Cambridge Tinkering Lab (Makerspace) for innovators



Association with top 50 core Mech companies



GATE coaching and support classes



International Industry mentors

RESEARCH SCOPE



Thermal Sciences and Fluid Mechanics



Mechanics and Materials



Biomechanics and Medical Devices



Manufacturing and Automation



Robotics and Control Systems

PROGRAMME

CIVIL ENGINEERING

 4 YEARS PROGRAMME  60 SEATS

 RESEARCH AND INCUBATION

 INDUSTRY CURATED PROJECTS

 GLOBAL SCIENTISTS AS FULL-TIME MENTORS



“ Embarking on the journey of Civil Engineering is like becoming the silent force shaping the world's landscapes. You're the architect of urban development, from designing sustainable buildings to planning efficient transportation systems. You'll prevent environmental hazards, provide clean water, and craft resilient infrastructure. ”

HERE, YOU WILL ACQUIRE

- Designing infrastructure with embedded sensors and IoT technologies for real-time monitoring and maintenance.
- Knowledge of sustainable and eco-friendly construction materials and practices.
- Integration of renewable energy sources in infrastructure projects, such as solar panels or energy-harvesting systems.
- Utilising AR and VR for virtual walkthroughs, training simulations, and project visualisation and gain communication skills for diverse audiences.
- Climate-responsive designs and water management technologies for sustainability and efficiency.

YOU ARE A NATURAL CIVIL ENGINEER IF YOU HAVE:

- Strong spatial visualisation.
- Practical and real-world problem-solving skills.
- Proactive approach in identifying and addressing potential issues.
- Understanding of environmental factors and considerations.

CAREER OPPORTUNITIES

Functions: Structural Engineer, Geotechnical Engineer, Construction Project Manager, Environmental Engineer, Transportation Engineer, Urban Planner, Water Resource Engineer, Surveying Engineer, Quantity Surveyor, Building Services Engineer, Infrastructure Design Engineer

Highest Domestic Package
9 LPA*

Average Domestic Package
6 LPA*

THE CIVIL EXPERIENCE



Industry and site visits



Funded industry projects



GATE coaching and support classes



Seminars, workshops and skill-building courses



Consultancy projects for students

RESEARCH SCOPE



Structural Engineering



Geotechnical Engineering



Transportation Engineering



Environmental Engineering



Water Resources Engineering

PROGRAMME

ARTIFICIAL INTELLIGENCE & MACHINE LEARNING

-  4 YEARS PROGRAMME
-  120 SEATS
-  RESEARCH AND INCUBATION
-  INDUSTRY CURATED PROJECTS
-  GLOBAL SCIENTISTS AS FULL-TIME MENTORS



“ Picture yourself as the architect of intelligent systems and algorithms that can learn and evolve! As an AI/ML engineer, your job is to craft algorithms, design models, and train machines to think, predict, and adapt. You're the brain behind systems that power virtual assistants, recommendation engines, and even autonomous vehicles. ”

HERE, YOU WILL ACQUIRE

- Mastery in programming languages like Python, R, or Julia and more.
- Statistical concepts, methods, handling and pre-processing large datasets, along with algorithms for processing and analysing human language data.
- In-depth knowledge of machine learning algorithms and their applications and familiarity with deep learning frameworks for neural network development.
- Effectively conveying technical concepts to both technical and non-technical stakeholders, and collaborative team work.

YOU ARE A NATURAL AI & ML ENGINEER IF YOU HAVE:

- Strong analytical skills.
- Understand data patterns.
- Ability to approach challenges systematically.
- Strong problem-solving abilities.
- Strong Foundation on AI/ML Techniques.

CAREER OPPORTUNITIES

Functions: Machine Learning Engineer, Data Scientist, AI Research Scientist, Computer Vision Engineer, Natural Language Processing (NLP) Engineer, Robotics Engineer, AI Solutions Architect, Data Engineer, AI Product Manager, AI Ethicist

Highest Domestic Package
53.20 LPA*

Average Domestic Package
12 LPA*

THE AI & ML EXPERIENCE



Renowned AI scientists and researchers as professors



Externally funded Industrial projects



Research & industry driven seminars & skill building



Internship opportunities in leading partner companies



Real-time industry projects

RESEARCH SCOPE



Deep Learning and Neural Networks



Reinforcement Learning



Natural Language Processing (NLP)



Explainable AI (XAI)



AI Ethics and Fairness



Generative AI

PROGRAMME COMPUTER SCIENCE & ENGINEERING

CSE - (INTERNET OF THINGS & CYBER SECURITY INCLUDING BLOCKCHAIN TECHNOLOGY)

CSE - (DATA SCIENCE)



4 YEARS PROGRAMME



60 / 60 SEATS



RESEARCH AND INCUBATION



INDUSTRY CURATED PROJECTS



GLOBAL SCIENTISTS AS FULL-TIME MENTORS

“ Unlock a safer, connected future. Architect IoT, secure digital realms, and pioneer blockchain. Harness data to drive innovation, decode datasets, build predictive models, and turn insights into action. ”

HERE, YOU WILL ACQUIRE

- Proficiency in programming languages for IoT device development, as well as networking protocols and communication standards for IoT device connectivity.
- Knowledge of distributed systems architecture and proficiency in designing and developing embedded systems for IoT devices, security infrastructure.
- In-depth knowledge of security protocols, encryption techniques and skill in simulating cyber-attacks to identify vulnerabilities in systems.
- Expertise in cryptographic principles that ensure secure blockchain transactions.

CAREER OPPORTUNITIES

Functions: IoT Product Managers, IoT Architect, IoT Developer, IoT based products development firms, Blockchain quality engineer, Blockchain developers, Blockchain project managers, Security Architect, Data Science Penetration Tester, Ethical Hacker, Chief Information Security Officer

HERE, YOU WILL ACQUIRE

- Mastery of programming languages like Python, R, and SQL for data manipulation and analysis.
- In-depth understanding of machine learning, AI algorithms, and statistical modeling.
- Proficiency in handling large-scale data using Big Data technologies such as Hadoop and Spark.
- Expertise in data visualization tools like Tableau, Power BI, and Matplotlib for insightful storytelling.
- Knowledge of cloud computing platforms for scalable data solutions, including AWS, Azure, and Google Cloud
- Expertise in data analytics
- Data Warehousing

CAREER OPPORTUNITIES

Functions: Data Scientist, Data Analyst, AI Engineer, Big Data Engineer, Machine Learning Engineer, Business Intelligence Analyst, Research Scientist, Data Architect

THE ICBS / DS EXPERIENCE



Renowned AI, ICBS, DS scientists and researchers as professors



Industrial projects funded by external funding agencies



Industry driven space is missing



Incubation and research opportunities



Internship opportunities in leading partner companies



Real-time industry projects

RESEARCH SCOPE



Cybersecurity & forensic



Security Architecture



Digital Image Processing



AI and ML

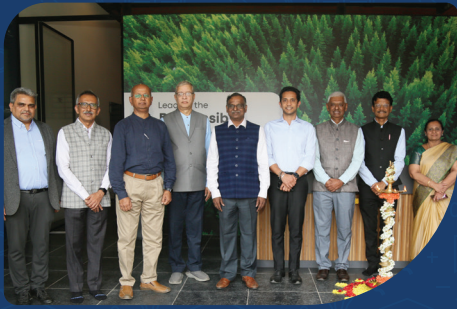


Deep Learning and Neural Networks



Big Data Management and Analytics

NOTABLE MILESTONES



Cambridge Institute of Technology had the distinct honor of hosting Dr. V. Narayanan for the inauguration of metal 3D printing facility at Galactic 3D!

Delegates

- Dr. V. Narayanan, Chairman of ISRO and Secretary, Department of Space
- Dr. Arumugam, Deputy Director, LPSC, ISRO
- Dr. P.G. Diwakar, ISRO Chair Professor, NIAS
- Dr. Sanjay Barad, Scientist G, GTRE, DRDO.



Signs MoU with NRDC at International Symposium on Technology Transfer in collaboration with NRDC & United States Patent & Trademark Office (USPTO)

Delegates

- Christopher W Hodges - U.S. Consul General in Chennai
- Dr. U. T. Vijay - Executive Secretary, KSCST, Govt of Karnataka
- Commodore Amit Rastogi (Retd) - CMD, NRDC, DSIR MoST, Govt of India
- Ms. Kathi Vidal - U.S Under Secretary of Commerce for Intellectual Property and Director, USPTO
- John Cabeca - U.S. IP Counselor for South Asia, USPTO



CORPS DES MINES: Learning Expedition Innovation and Collaboration (Visit by French Delegates).

Delegates

- Amabile Arno - Deputy HR of Corps des Mines
- Revol Marc - Head of AI projects at Direction General des entreprise (Minister of Economy)
- Christie Chamber Deydier - Leadership and Business Alignment Learning Director at Thales
- Sébastien Guérémy - VP Digital Identity and Verification Solution at Thales
- Patrice Duboe - Executive Vice-President, CTO AeroSpace & Defense, CTIO S/C Europe at Capgemini
- Francois Colonna - Director Bangalore Engineering Competence Center, India



The inauguration of the Sir M V Auditorium

Shri. SIDDARAMAIAH,
Chief Minister of Karnataka.

The inauguration of the Semiconductor Systems Research & Innovation Lab and the Center of Excellence for Semiconductors

Shri. PRIYANK KHARGE
Honourable Minister, RDPR, IT & BT
Government of Karnataka



The inauguration of the UNISEC India Chapter, WCRC Chapter, and Demonstration, including the launching of CanSats by Drone,

Padma Shri. DR. Y.S. RAJAN,
Distinguished Professor in Indian
Space Research Organisation.

Inauguration of First Year Bachelor of Engineering Programme (B.E.) 2024 Batch

Dr. M. C. SUDHAKAR
Minister for Higher Education,
Government of Karnataka



ACE ALLIANCE
Best Partner Award

SAMSUNG

Excellence in Innovation and Technology

ET BUSINESS AWARDS
2024



CII-SR Solid Waste
Management award

CII
Confederation of Indian Industry

Sustainable Innovation and Academic Excellence



EXPERIENCE & ENVIRONMENT

“At Cambridge Institute of Technology, engineering degrees offer more than just classroom learning. The learning, recreational and creative facilities fuel your learning journey as much outside the classroom as inside.”



Fully automated library with 35000+ resources, also available online



Projects for students from 1st year on



Paid internships for all students from 6th semester



20+ Sports & Technology Clubs



Chiguru: CIT's Annual Engineering Cultural Fest.



On-campus Industries and startups



Transforming the community through education and sustainability



CITech Small Satellite



R&D Lab with state-of-the-art facility

CAREERED

FUELING YOUR COMPETITIVE EDGE FOR SUCCESS

“Spruce up your engineering skills with our CareerEd programmes. Crafted by industry practitioners, each programme arms you with a competitive edge that takes you closer to your goals.”

Powered By



- ARTIFICIAL INTELLIGENCE
- INTERNET OF THINGS
- CODING AND PROGRAMMING
- BIG DATA

Powered By



- CLOUD COMPUTING
- AZURE STORAGE SERVICE
- MICROSOFT AZURE AI FUNDAMENTALS
- MS 900 MICROSOFT 365 FUNDAMENTALS

Powered By



- JAVA J2EE
- FULL STACK FOR PROJECT BASED LEARNING APPROACH

Powered By



- FUNDAMENTALS OF RISC-V
- RISC-V SOC DESIGN & VERIFICATION
- RISC-V PROCESSOR DESIGN & VERIFICATION

Powered By



- DIGITAL DESIGN
- DESIGN VERIFICATION
- DESIGN FOR TESTABILITY
- PHYSICAL DESIGN & VERIFICATION

Powered By



- ADDITIVE MANUFACTURING DESIGNER
- ENGINEERING WITH INDUSTRY 4.0

Powered By



- HEATING, VENTILATION, AND AIR CONDITIONING
- SUSTAINABLE COOLING WITHOUT ELECTRICITY



TOUCHSTONE
EVENTS



TALENT TRANSFORMATION HUB

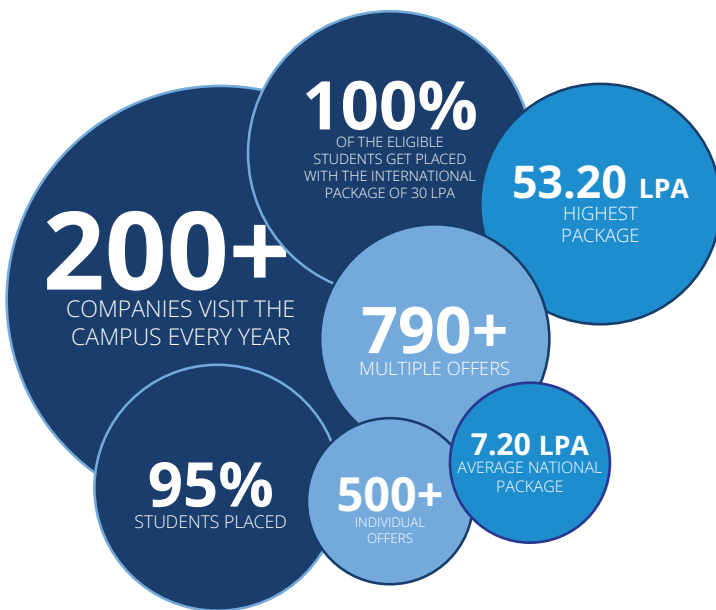
“ Realise your dreams at TTH. Talent Transformation Hub, or the placement and training department at Cambridge Institute of Technology, connects you to top industry opportunities, offering guidance, workshops, and networking. TTH is committed to securing your dream job and ensuring your success. ”



✓ **Training and career Guidance for Industry readiness** by practising professionals

✓ **20+ Specialised Courses** based on your interest and specialisation

✓ **Profile Building guidance** including resume writing, presentation, & soft skills



THE HUB

Personality and Psychometric Assessment to diagnose every student's strengths and challenges to design a specific customised career guidance programme

Industry-level Technical Skill Training. Management skills, personality development and communication skill development programmes.

Opportunities to practice skills through multiple industry projects. Guest lectures and workshops by industry experts.

Digital Profile building and self-brand building through social media training programmes.

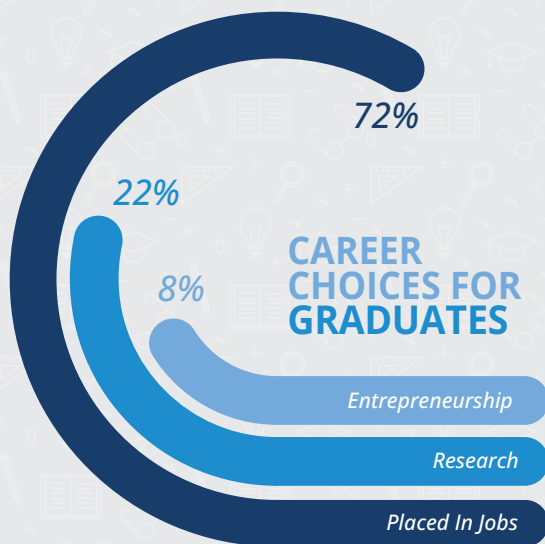
Alumni Mentorship Programme by CIT Alumni across the world.

“ The placement cell plays a pivotal role by exposing us to the external world and bringing in the companies. I am very grateful for providing different workshops and classes on languages like C++, data structures, Python, and Java, which helped us prepare for placements and manage academics as well. ”

SRIVIDYA MUDGAL
WORKING IN COGNIZANT ALUMNI,
ECE DEPT

“ The college provided us with the perfect platform to pursue our hobbies and interests and, in return, gave me proper recognition of our talent. The college organised various preplacement programmes for each and every student to crack the jobs – during campus placements. I am thankful for being a part of Cambridge Institute of Technology ”

ASHIR P.N.P,
CO-FOUNDER & MANAGING PARTNER,
EXPEDITE AUTOMATION LLP
EEE DEPT. GRADUATE



7 out of 10 students choose a job and get placed
 2 out of 10 students choose Research
 1 out of 10 students choose Entrepreneurship

	HIGHEST PACKAGE (2019-23)	HIGHEST PACKAGE (2020-24)	HIGHEST PACKAGE (2021-25)	AVERAGE PACKAGE
CSE	21 L	16 L	33 L	12 L
ISE	21 L	15 L	12 L	10 L
ECE	11 L	14 L	33 L	8 L
EEE	9 L	11 L	7.4 L	4.4 L
ME	9 L	9 L	5 L	4.4 L
CIVIL	8 L	10 L	5.5 L	4.5 L
AIML	—	—	53.2 L	12 L

SAMSUNG

Microsoft

intel.

Panasonic

BAJAJ FINSERV

hp

HCL

TECH mahindra

wipro

Mindtree

Infosys

KPMG

THALES
Building a future we can all trust

IBM

Mphasis
The Next Applied

TRANE TECHNOLOGIES

accenture

EY
Building a better working world

SYNOPSYS

TCS TATA CONSULTANCY SERVICES

ORACLE

Deloitte.

amazon

DELL

Qualcomm

nvidia

eos

AMD

ti.
HEXAWARE

McAfee

BOSCH

Capgemini

JUSPAY

Adobe

Oslash

Panasonic

WANT TO KNOW MORE ABOUT THE PLACEMENT PROCESS?

CONTACT THE DIRECTOR, TTH AT director.tp@cambridge.edu.in



RESEARCH AT



by the Department of Scientific and Industrial Research (DSIR)

The Professional Research Ecosystem on Campus

WHAT DOES CCCIR DO?

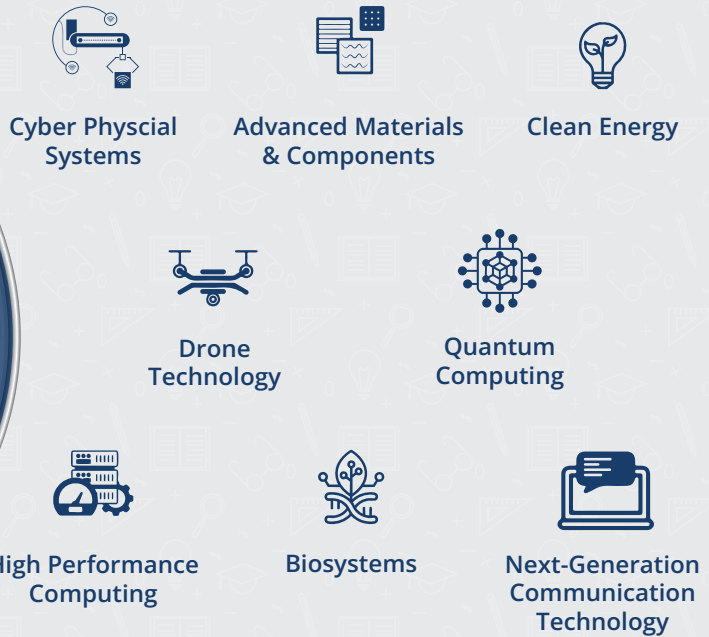
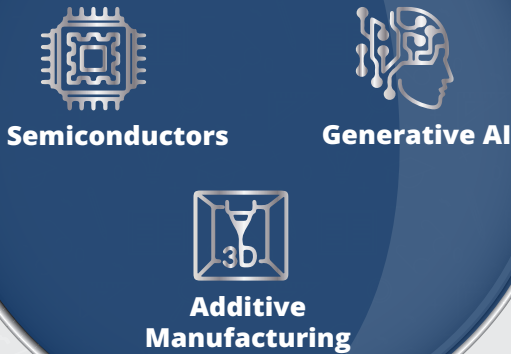
- Research, Design, Innovation through Collaboration & Grants
- Product development & Commercialization
- Skilling & Employment
- Incubation & Startup Support
- Consultancy & corporate training

3 YEARS AT A GLANCE

INR 25 CRORE+ FUNDING RECEIVED



FOCUS AREAS



OUR RESEARCH PARTNERS



CAMBRIAN Incubation Center (CIC)

Tech-Driven. Innovation-Fuelled. Cambrian-Powered.

Recognized as a Host Institute for the Implementation of the Incubation Component under the MSME Innovative Scheme.

Supported by



STATS AT A GLANCE

200+ Budding Entrepreneurs

23+ Student Startups

30+ Technical Training Sessions

20+ Experts

15+ Lakhs Seed Funding

15+ Patents

PROFESSIONAL SERVICES

- Agriculture & Food Processing
- Biotechnology
- Healthcare

SYSTEMS & INFRASTRUCTURE

- Energy
- Defence
- Water Management
- Urban Infrastructure
- Waste Management

LIFE SCIENCES

- Education & Training
- Business & Legal Services

EMERGING TECHNOLOGY

- Cyber Security
- IT Enabled Services
- Smart electronics
- Artificial Intelligence

FOCUS AREAS

FACILITIES FOR MSME/STARTUPS



“Received ₹80+ Lakhs for Design Projects under the MSME Innovative Scheme, Govt. of India.”

ChOSS Cambrian House Of Student Startup

“Cambrian House of Student Start-up (CHOSS) is a platform for you to grow professionally and personally to meet societal needs with your innovative ideas. Cherish your entrepreneurial dreams through effective engagement, industrial connect and practical exposure.”



SEEDBRAINS

SEEDBRAINS is an international innovation event for professionals and students to SEED their IDEAS and INNOVATIONS and exhibit the solutions for real-life problems for a better and sustainable future. A platform for young minds to exhibit their innovative ideas and solutions for real-life problems, for a better and sustainable future.

RESIDENT STARTUPS AT CAMBRIAN LABS





LIBRARY

The information hotspot with 35000+ Resources



AUDITORIUM

Seating capacity of 1000 with modern AV Equipment for Large indoor events.



DIGITAL CLASSROOMS AND LABS

Modern Equipment, digital gadgets fill them all.

LIFE @ CIT

A host of facilities thoughtfully designed to enrich the college stay and experience of young learners

WORK



FITNESS CLUBS

Workout stations with 25+ gym equipment for fitness enthusiasts

STUDENTS' CLUBS

Technical, cultural and outreach clubs for academics, fun and socialwork





CULTURAL EVENTS

To foster student collaboration & extracurricular growth



SPORTS

For outdoor and indoor Sportsmen and Sportswomen

LIVE. LAUGH. LEARN.

LIFE

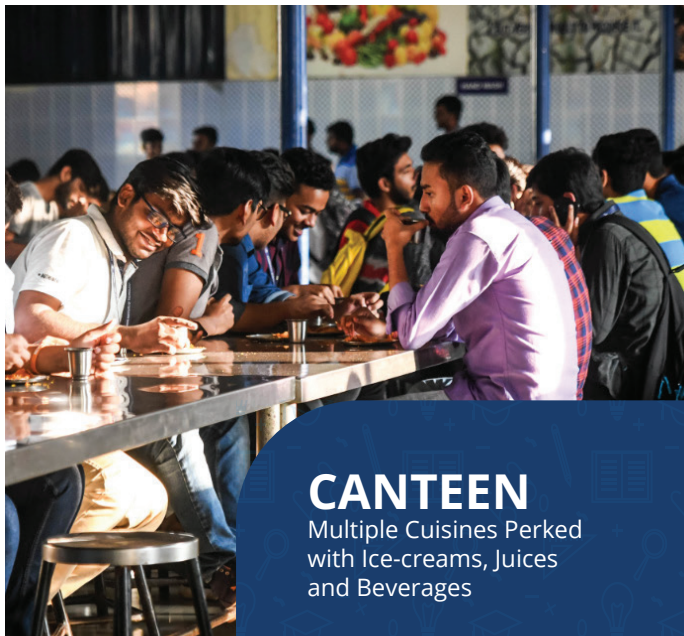
HOSTEL

Home away from home



TRANSPORT

Routes to cover all areas of Bengaluru city



CANTEEN

Multiple Cuisines Perked with Ice-creams, Juices and Beverages



MAIN CAMPUS

Krishnarajapuram,
Bengaluru 560 036

CET Code: E149 Comed-K Code: E033

admissions@cambridge.edu.in
+91 97319 98888 | 98808 01188

NORTH CAMPUS

off International Airport Road,
Kundana, Bengaluru 562 110

CET Code: E222 Comed-K Code: E161

admissions@cambridge.edu.in
+91 96069 77550 | 95384 41143

This brochure has been drafted in advance of the academic year to which it applies. Every effort has been made to ensure that the information contained in this brochure is accurate at the time of publishing, but changes (for example to course content) are likely to occur given the interval between publication and commencement of the course. It is therefore very important to check our website for any latest updates - engg.cambridge.edu.in

engg.cambridge.edu.in